

A Project By....



Architect :  
Architect Inc,Badlapur

R.c.c Consultant :  
S.V. Patel & Associates

Booking Office & Site Address :  
Survey No. 130/3, Jambhul Road,  
Next To Satyam Elegenza,  
Near Sarvodaya Nagar,chikhaloli,  
Ambernath (w) 421 501.

Email : sales.jkinfra@gmail.com  
Web : www.jkinfrabuilders.com

For Booking Contact :  
8888700061  
9225551144



A Project By....



MAHA RERA NO :





Create with the Heart ;  
Built with the Mind...!!





## Features at....JK kasturi

- Clear Title Plot.
- G+7 & G+8 Residential Project.
- 1 BHK & 2 BHK Flats.
- Earthquake Resistance R.c.c Structure.
- Elevators From Reputed Company.
- Decorative Entrance Lobby.
- Power-backUp For Common Areas & Elevators.
- Ample Water Supply.
- 24x7 Security.
- Ample Parking Space.
- Premium Weather Coat For Exterior Wall.








Trust Is Just One  
Of The Things  
We Build It Well..!!





An aerial architectural rendering of the JK Kasturi apartment complex. The main building is a large, multi-story structure with a light-colored facade and numerous balconies. It is situated next to a wide road with several cars and a bus. To the right of the building is a landscaped area with trees and a children's play area. In the background, other residential buildings and greenery are visible.

JK Kasturi Embodies Your Need To Attain Peace Of Mind. Spiritual Clairvoyance And Fitness. It Is Sum Of All Things Healthy .it Is That Which Cleanses Stress And Infuses A Sense Of Vigour In Day To Day Life. A Set Of Amenities Tailored To Meet Your Rejuvenation Needs Are Offered To You At JK kasturi; From Enjoying A Quite Evening At The Landscape Garden To Spending Quality Time with Your Kids At Children's Play Area..your Every Need For Peaceful Life Is Answered.. With Grace And Elegance.





## Amenities at....JK kasturi

- Well Equipped Gym & Indoor Games in Clubhouse.
- Cctv Camera In Common Area.
- Landscape Garden.
- Children Play Area.
- Jogging Track.



## Common Specification at ....JK kasturi

2 BHK

### Flooring

- 2'x2' Ceramic Flooring Tiles In All The Rooms.

### Kitchen

- Black Granite Kitchen Platform With Stainless Steel Sink.
- Ceramic Tiles Dado Above Kitchen Platform.

### Windows

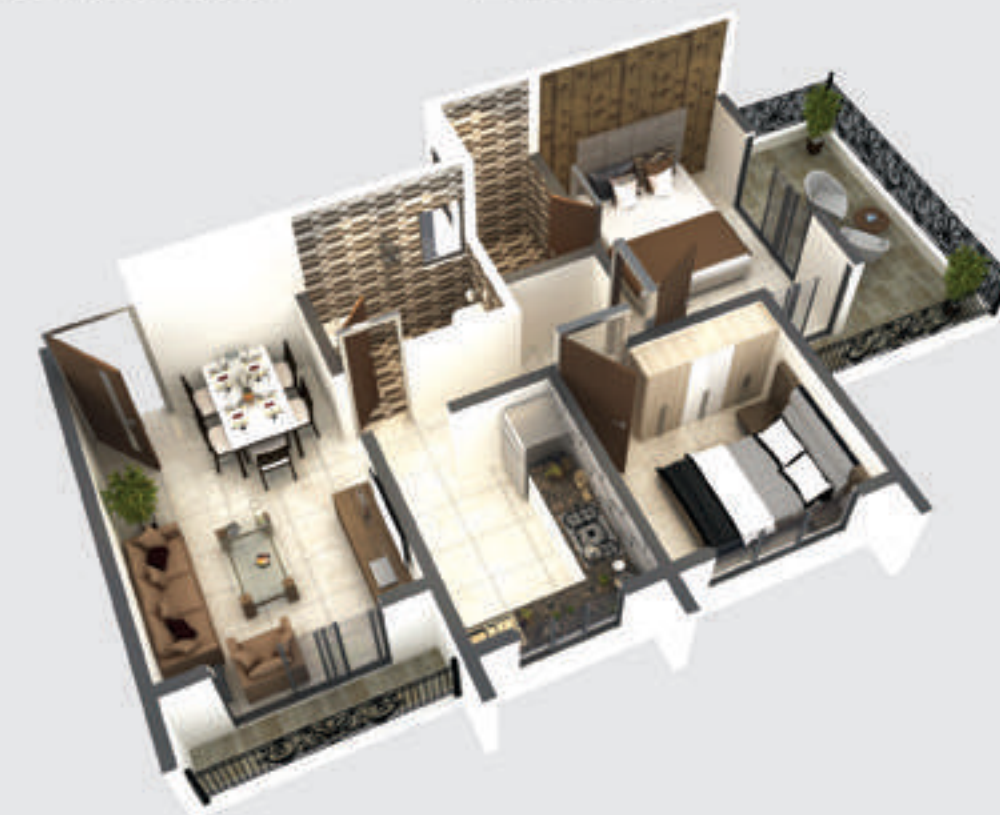
- Powder Coated Aluminum Sliding Windows.
- With Glass In Living Room, bedroom & Kitchen.

### Wall Finish

- Internal Walls Painted In Semi Acrylic Paint.
- External Walls Coated With Acrylic Paint.

### Electrical

- Concealed Copper Wiring With Reputed Brand.
- Modular Switches ,telephone & T.v.(cable) Points.
- In Living & Bed Room.



### Bath/Wc

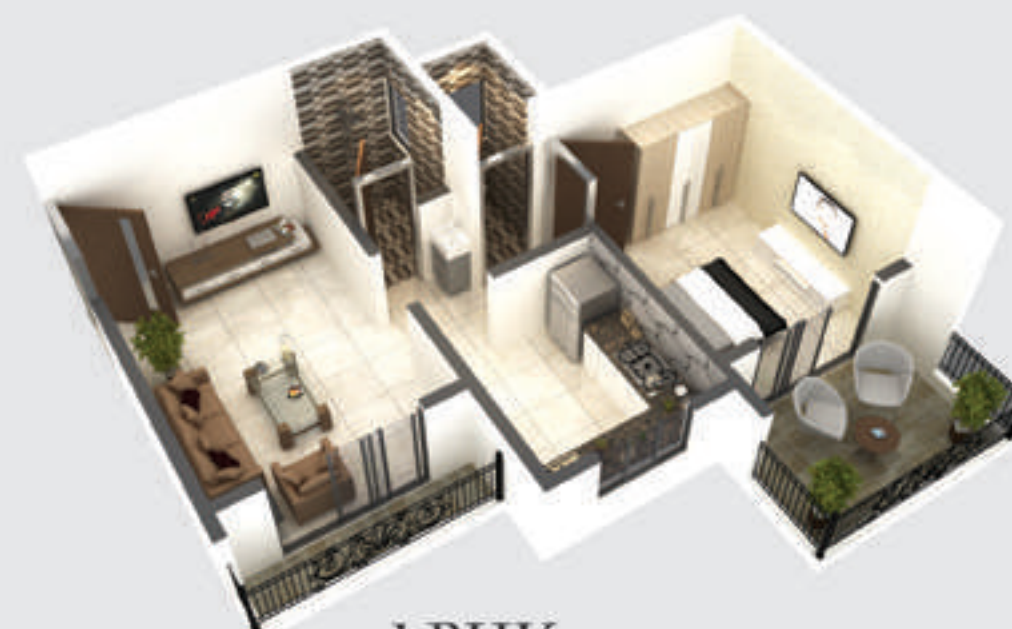
- Concealed plumbing with good quality sanitary fittings with PVC plumbing fittings.
- Glazed tiles up to full height.
- Ceramic tiles flooring in bath & WC.
- Good quality aluminum louvers in bath & WC.
- Hot & Cold water mixer point.
- One wash basin.

### Door

- Main door with decorative lamination finish & internal wooden doors.
- Marble frame for all the doors of bath & WC.
- Wooden door frames for all rooms.
- Main door with good quality night latch ,heavy duty airdrop, safety chain,peephole& decorative handle.

### Water Tank

- Underground & overhead tank with adequqte storage capacity.



1 BHK

Note : All Common Amenities Will Be Given On Completion Of The Project









Clubhouse at....JK kasturi



Rare side view



PROPOSE  
C WING





## Location Feature....JK kasturi

- 5 min. walking distance from Proposed Chikhlooli Rly.Station.
- 15 min. drive from Badlapur & Ambernath Railway Station.  
Touching 18mtr DP road.
- 2 min. walking distance from Ambernath Municipal Corporation Garden.
- 5min. drive to Shanti Sagar Resort.
- Approx 2 min. walking distance to natural pond.
- Banks, Market, D Mart, Hospital, School, Collages, Garden, Play Ground, Stadium at proximate distance from the project site.
- Railway Station, Restaurants, Hotels at proximate distance from the project site.
- Near Matheran & Kondeshwar waterfall



## ABOUT AMBERNATH & BADLAPUR

One of the highest rated locations in Mumbai Conurbation on Various Real Estate Websites, Ambernath & Badlapur is the personification of beauty in its truest sense ! A very important town in the Thane District that has gained significant exposure primarily as a residential sector, Ambernath & Badlapur is gearing towards becoming an economic hub . Even as a thriving town at the threshold of bursting into a prominent economic centre, Ambernath & Badlapur is still nestled in the nature's pristine valley; providing an environment rich in natural beauty, that are eye- pleasing and soul -enriching!

## The way to....JK kasturi

